

See discussions, stats, and author profiles for this publication at: <https://www.researchgate.net/publication/281968522>

Breeding and rearing the Critically Endangered Lake Oku Clawed Frog (*Xenopus longipes* Loumont and Kobel 1991).

Article in Amphibian and Reptile Conservation · September 2015

CITATIONS

6

READS

360

9 authors, including:



Christopher Michaels

Zoological Society of London

55 PUBLICATIONS 242 CITATIONS

[SEE PROFILE](#)



Benjamin Tapley

ZSL

79 PUBLICATIONS 403 CITATIONS

[SEE PROFILE](#)



Luke Harding

Zoological Society of London

21 PUBLICATIONS 32 CITATIONS

[SEE PROFILE](#)



Zoe Bryant

Zoological Society of London

9 PUBLICATIONS 25 CITATIONS

[SEE PROFILE](#)

Some of the authors of this publication are also working on these related projects:



Captive husbandry and breeding of *Gonyosoma boulengeri* [View project](#)



Assessment of release strategies for confiscated and Endangered Big-headed turtles in Vietnam [View project](#)



Breeding and rearing the Critically Endangered Lake Oku Clawed Frog (*Xenopus longipes* Loumont and Kobel 1991)

^{1,*†}Christopher J. Michaels, ^{1,*}Benjamin Tapley, ¹Luke Harding, ¹Zoe Bryant, ¹Sebastian Grant, ¹George Sunter, ¹Iri Gill, ²Oscar Nyngchia, and ³Thomas Doherty-Bonec

¹Zoological Society of London, Regent's Park, London, UNITED KINGDOM NW1 4RY ²Conservation Research and Action for Amphibians Unique to Cameroon (CRAAUC), Royal Zoological Society of Scotland, Edinburgh Zoo, Corstorphine Road, Edinburgh, UNITED KINGDOM ³Leeds University, Woodhouse Lane Leeds UNITED KINGDOM LS2 9JT

Abstract.—The Lake Oku Clawed Frog *Xenopus longipes* is a Critically Endangered, dodecaploid anuran endemic to Lake Oku in Cameroon. An *ex situ* population of this species was established at Zoological Society of London (ZSL), London Zoo in 2008, as well as at several other institutions, with the intention of providing data on the biology and husbandry of this species. We report the first captive breeding of the species. Adult frogs maintained under environmental conditions designed to mimic field data produced clutches of 7–300 eggs; eggs measured 1.23 mm in diameter, and were laid singly after a period of 6.5 hours in axial amplexus. Spawning took place only during the day. Tadpoles hatched in 2–3 days and development was very long compared to congeners, lasting 193–240+ days until metamorphosis. Tadpoles grew very large (maximum 79 mm total length), particularly compared with the relatively small adult size (maximum 36 mm Snout to Vent Length [SVL]). Tadpoles proved to be highly sensitive to total dissolved solids (TDS) in the water and only thrived when low levels (20 mg/L) were used. Metamorphosis concluded with an SVL of 19–25 mm and F1 animals began first sexual activity at 5–6 months post metamorphosis. These data will inform future husbandry in captivity as well as illuminating facets of biology previously unknown and difficult to determine in the field.

Key words. Amphibian; *ex situ*; captive husbandry; water quality; Cameroon; West Africa; field data

Citation: Michaels CJ, Tapley B, Harding L, Bryant Z, Grant S, Sunter G, Gill I, Nyngchia O, Doherty-Bone T. 2015. Breeding and rearing the Critically Endangered Lake Oku Clawed Frog (*Xenopus longipes* Loumont and Kobel 1991). *Amphibian & Reptile Conservation* 9(2) [General Section]: 100–110 (e102).

Copyright: © 2015 Michaels et al. This is an open-access article distributed under the terms of the Creative Commons Attribution-NonCommercial-NoDerivatives 4.0 International License, which permits unrestricted use for non-commercial and education purposes only, in any medium, provided the original author and the official and authorized publication sources are recognized and properly credited. The official and authorized publication credit sources, which will be duly enforced, are as follows: official journal title *Amphibian & Reptile Conservation*; official journal website <amphibian-reptile-conservation.org>.

Received: 03 June 2015; **Accepted:** 20 August 2015; **Published:** 18 September 2015

The creation of *ex situ* populations for research and conservation breeding has become an important part of the international conservation response to global amphibian declines (Browne et al. 2011; Gascon 2007; Koute et al. 2012; Wilkinson et al. 2013), which represent one of the greatest conservation challenges in history (Zippel et al. 2011). The requirements of amphibians in captivity are poorly understood and many species are presently difficult to maintain and breed (Antwis et al. 2014; Antwis and Browne 2009; Browne et al. 2006; Dugas et al. 2013; King 2011; Ogilvy et al. 2012; Verschooren et al. 2011). *Ex situ* programs have experienced difficulty in providing conditions under which animals survive (Norris 2007; Gagliardo et al. 2008) or successfully breed (Birkett et al. 1999; Gratwick 2012). Moreover, information on how to

rear tadpoles is particularly lacking in peer reviewed literature (Pryor 2014).

The Lake Oku Clawed Frog *Xenopus longipes* Loumont and Kobel 1991 (Fig. 1) is an entirely aquatic, dodecaploid frog found only in Lake Oku, a high elevation crater lake in the north west region of Cameroon. *Xenopus longipes* is classified as Critically Endangered by the IUCN (Stuart et al. 2008) due to its restricted range and therefore vulnerability to stochastic factors. Between 2006 and 2010 recurring, enigmatic *X. longipes* morbidities and mortalities were observed, but the overall impact of these events is unknown (Doherty-Bone et al. 2013). A captive-breeding program was considered vital in case of a catastrophic collapse of the population due to the potential introduction of fish to the lake as well as habi-

Correspondence. Email: christopher.michaels@zsl.org (Corresponding author). *These authors contributed equally to the work.

tat degradation and disease threats (Tinsley and Measey 2004a). *Xenopus longipes* is ranked as the 35th global priority for amphibian conservation on the basis of threat and evolutionary history by the Zoological Society of London's Evolutionarily Distinct and Globally Endangered (EDGE) program (Isaac et al. 2012).

Captive colonies of the Critically Endangered *X. longipes* were established in 2008 at Antwerp Zoo (later moved to Cologne Zoo and one private breeder), Zoological Society of London (ZSL), London Zoo, and more recently in 2013, at the Steinhart Aquarium in the USA, for conservation research purposes (Browne et al. 2009; T. Ziegler pers. comm.; P. Janzen pers. comm.; D. Blackburn pers. comm.). The zoo colonies were intended to be assurance populations for conservation breeding. However, due to concerns over biosecurity and suitability of animals for release to the wild, the ZSL population was assimilated into the main collection with the focus now on conservation research aiming to document the reproductive biology of the species, as little is currently known. Such information is of importance for developing *in situ* conservation management strategies. Despite repeated attempts in all these institutions, however, efforts to breed and rear this species in captivity have failed, even with the use of artificial reproductive techniques (P. Janzen, pers. comm.; D. Blackburn pers. comm.).

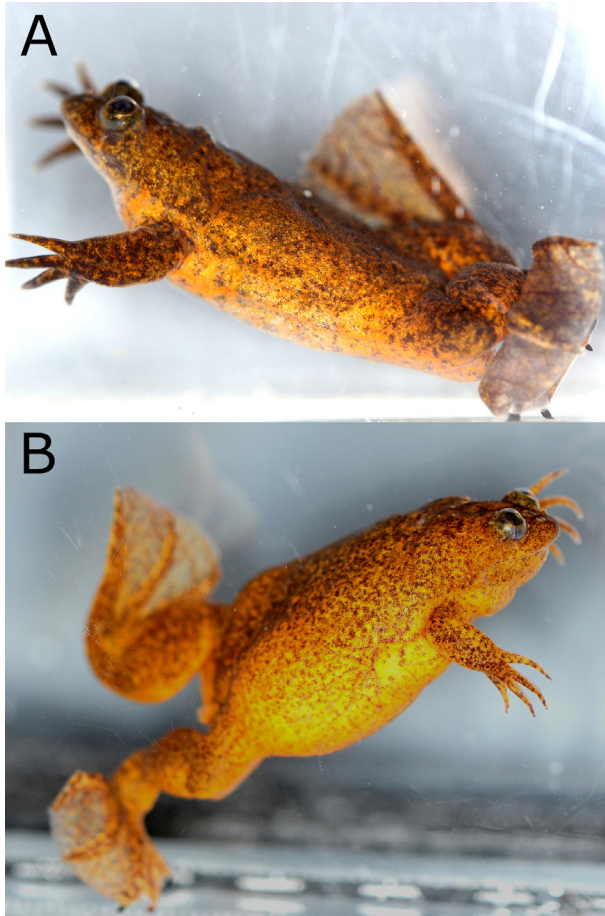


Fig. 1. Male (top) and female (bottom) adults of *Xenopus longipes* in the collection at ZSL London Zoo (ZIMS ID 7441).

Here we report the first captive breeding success of *X. longipes* and the rearing of the tadpoles until metamorphosis.

Methods

In 2008, frogs were collected from Cameroon after consultation with local communities (Permit No. 0742/CO/MINFOF/SG/DFAP/SDVEF/SC and No. 0928/PRBS/MINFOF/SG/DFAP/SDVEF/SC). Lake Oku is considered sacred by the Oku villages and permission had to be granted before any contact with the lake could be made. Thirty-nine founders were housed at Zoological Society of London (ZSL), London Zoo.

Table 1 summarizes the initial and subsequent husbandry used for these frogs between 2008 and 2014. In 2012 the husbandry of *X. longipes* was reviewed (Table 1) as breeding had not occurred and the temperature regime and water parameters did not reflect conditions in the field (Table 2). Captive management should be informed by field data (Tapley and Acosta 2010; Michaels and Preziosi 2013; Michaels et al. 2014) and replicating field conditions has improved captive breeding success of *X. laevis* (Godfrey and Sanders 2004). In 2012, all 32 (30.2) remaining founders were sexed; males being smaller, slimmer, and having keratinized nuptial pads (Fig. 2A and C) and females possessing a trio of cloacal papillae (Fig. 2B). These features became more prominent around breeding events, but were noticeable year round. All 30 female frogs were continuously heavily gravid and amplexus was occasionally observed, but without spawning. Additional founders including four more males were imported from Cameroon in July 2012 and after completing their quarantine period were assimilated into the existing *X. longipes* colony.

In June 2013 mixed sex groups varying from 1.6 to 3.3 were transferred to a custom-made system (Fig. 3; Table 1). A new environmental regime based on longitudinal field data collected monthly from Lake Oku by Doherty Bone et al. (2013) was adopted (Tables 1 and 2; Fig. 4). Lake Oku water temperature and pH were simulated initially, and Total Dissolved Solids (TDS) was subsequently added to the parameters being replicated in 2014 (Table 1). Total Dissolved Solids was measured using Micro 800 Optical DO meter (Palintest) and pH using a Micro 600 pH meter (Palintest). The feeding regime was also modified (Table 1) and a more diverse array of food items were offered to compensate for potential dietary deficiencies as knowledge regarding the nutritional requirements of amphibians is lacking (Densmore and Green 2007).

Results

On 20.3.14, two pairs of *X. longipes* spawned naturally and without hormonal induction, followed by a number

Breeding and rearing the Lake Oku Clawed Frog

Table 1. Changes in enclosures, life support systems, environmental parameters and diets used for *X. longipes* between 2008 and 2014. Reproduction occurred in 2014.

Dates	Enclosure type and size	Life support systems and furnishings	Photo-period	Water parameters	Diet
2008–2012	Acrylic aquaria (Exo Terra, Rolf C. Hagen) 20 L enclosures	Air-stream sponge filter; Plastic plants	10:14	pH c. 8.5 TDS: c. 350 mg/L Temperature: 19–22 °C	Blood worm (<i>Chironomus</i>), Nutrafin Max cichlid sinking capsules, Tetra prima granules and King British blood worm (freeze dried)
2012	Acrylic aquaria 20 L enclosures	Air-stream sponge filter; Plastic plants	10:14	pH c. 8.5 TDS: c. 350 mg/L Temperature: 18–19 °C	Mixed invertebrates: blood worm (<i>Chironomus</i> sp); glass worm (<i>Chaoborus crystallinus</i>); water fleas (<i>Daphnia</i> sp); hatchling crickets (<i>Gryllus bimaculatus</i> and <i>G. assimilis</i>) and worms (<i>Eisenia</i> sp.)
2013	48 L enclosures linked to 100 L sump	TR10 Teco chiller/heater and UV filter; External canister filter (FX6 Fluval). Plastic tubes, plastic and live plants (<i>Vallisneria</i> spp., <i>Echinodorus</i> spp.)	12:12	pH c. 7.5 TDS: c. 150 mg/L Temperature: 17–19 °C, with seasonal variation	Mixed invertebrates (as above)
2014	48 L enclosures linked to 100 L sump	TR10 Teco chiller/heater and UV filter; External canister filter (FX6 Fluval). Plastic tubes, plastic and live plants (<i>Vallisneria</i> spp., <i>Echinodorus</i> spp.)	12:12	pH c. 7.5 TDS: 20 mg/L Temperature: 17–19 °C with seasonal variation	Mixed invertebrates (as above)

of other spawning events (Table 3). In the initial spawning event a single pair in each of two tanks containing 1.2 animals spawned. Audible vocalizations, consisting of metallic clicks typical for *Xenopus* (Tinsley and Kobel 1996) were only heard very infrequently from spawning and non-spawning males and were not closely associated with spawning activity; being heard sporadically during both spawning and non-spawning periods. Amplexus and spawning behavior were only observed throughout the day, with no evidence of spawning occurring over-night. Amplexus was axial and the process of oviposition lasted 6.5 hours from initiation to termination of amplexus. Eggs, numbering seven to 300 per clutch (Table 3), were deposited singly over all available surfaces in aquaria. Egg diameter was 1.23 mm one hour after laying. Occasionally, multiple males attempted to amplex single females, but were dislodged by vigorous kicking on the part of the original male. Laying and non-laying females were observed feeding on the eggs, even during amplexus, so non-amplexant animals were removed immediately. Mating pairs were removed as soon as spawning was complete. Animals could not be individually identified, so it is unclear how many clutches were produced by individual animals. The initial spawning event occurred after increasing the temperature from 17.5 to 19.1 °C. This was done by adding warm tap water to the system, resulting in a pH shift from 7.5 to 8.09 to replicate the seasonal temperature and pH regime in Lake Oku, although being done two months earlier than this shift occurs in the field (Fig. 4). This shift occurred over a period of less than one hour after warm water was added in a single dose. However, as the breeding season is not documented in the field, there is no evidence that this seasonal

change accompanies the initiation of breeding in nature, other than this relationship observed in congeneric species (Kobel et al. 1996). Later spawning events in the following months (see Table 3) were not associated with manipulation of water parameters, but did follow heavy feeds with earthworms (*Eisenia* sp.). Fertility was highly variable; some clutches were almost entirely infertile, but in most cases fertility rates were close to 100%. Eggs developed and hatched in 2–4 days, with tadpoles initially clinging to hatch sites via the cement gland. Eventually eyes and pigmentation developed before becoming free swimming after 2–4 days. Free-swimming tadpoles initially congregated in areas of slow current, swimming against the water flow. Hatch rate varied between clutches, with later clutches being more consistently successful than earlier clutches.

A variety of combinations of conditions were used in attempts to rear tadpoles (see Table 4). However, we only had success by maintaining tadpoles in water with a very low TDS of 20 mg/L (measured at roughly weekly intervals) and without any live plants or accumulation of humic detritus, and only in aquaria isolated from the adult system possibly as a result of secretions from adults or toxins from PVC pipework used in the aquatic system. Mortality of tadpoles remained high until the TDS of the systems fell below 80 mg/L, with tadpoles becoming weak, opaque, and finally sinking to the floor of the aquaria before dying. Following gradual replacement of high TDS water with low TDS reverse-osmosis water, surviving tadpoles began to feed, swim normally, and to develop. Doherty-Bone et al. (2013) report a TDS of <10 mg/L (See Table 2), but our value of 20 mg/L was the lowest possible output from the RO system in use (Pen-



Fig. 2. Keratinized nuptial pads on the inside surfaces of the front limbs of male (A and C) and cloaca of a female *X. longipes* (B); note the cloacal papillae, which are absent in male frogs.

tair PRF; Fileder) and appears to be adequate for larval rearing.

Tadpole enclosures were glass aquaria measuring 50 × 36 × 30 cm (L × W × H) held in a temperature controlled room with water temperature at 18–20 °C. Between three and 15 tadpoles were housed per aquarium (maximum density of one tadpole per 3.6 litres). Aquaria were filtered with air-stream sponge filters set to the minimum effective flow to reduce turbulence, which would have disturbed the swimming and foraging behavior of tadpoles. Tadpoles were fed 2–4 times throughout the day on a suspension consisting initially of blanched and blended spinach or nettle, commercial *Xenopus* tadpole food, SERA Micron powdered food, and *Spirulina* alga, which was strained prior to use to remove larger plant

fragments. After several weeks, the diet was changed to only include commercial *Xenopus* tadpole food, SERA Micron (SERA), and *Spirulina* (3:1:1 by mass, suspended in water before adding to aquaria) to avoid the high oxalate content of spinach (Noonan and Savage 1999), which may interfere with calcium metabolism (Rosol et al. 1995). Food was added throughout the day dependent on the rate at which food was consumed in a given aquarium, with food density of 5.3 mg/L aquarium water provided immediately after feeding; density reduced gradually as food was consumed by tadpoles. Uneaten suspended food accumulated on the bottom of aquaria, where tadpoles were unable to consume it. Additionally, the low carbonate content of the water reduced the capacity for biological filtration. Consequently, nitrogenous

Table 2. Water temperature, pH, and TDS measured at the Lake Oku shoreline (modified from Doherty-Bone et al. 2013).

Parameter	Mean Value	±	Units
Water temperature	17.27	4.17	Celsius
pH	7.58	0.24	-
Total Dissolved Solids	8.72	2.27	Ppm



Fig. 3. Aquarium for *X. longipes*, set within a custom built, centrally filtered system (inset photograph) at ZSL London Zoo. Life support system and sump not shown – see text for details.

waste (measured using Photometer 7100 [Palintest]) was difficult to manage and tadpoles were briefly exposed to high levels of ammonia (>1 mg/L) and, later, nitrite (up to 2.4 mg/L) without mortality. A regime of 10% water changes in the morning and 50% water changes in the afternoon, both accompanied by removal of uneaten food on the bottom of tanks by siphon and thorough cleaning of sponge filters in aquarium water, helped to suppress nitrogenous waste to more acceptable, but still detectable levels (Ammonia: <0.1 mg/L; Nitrite: <0.5 mg/L) for most of the tadpole rearing period.

The tadpoles of *X. longipes* are described separately (Tapley et al. 2015). Development in the most rapidly developing tadpole (Fig. 5) lasted 193 days between hatching and metamorphosis. We report development using Gosner (1960) stages, as it was impossible to accurately apply the more detailed Nieuwkoop and Faber (1994) stages for *Xenopus laevis* development to live tadpoles without restraining them. This would likely have proven fatal for these delicate and Critically Endangered tadpoles, though could be employed in future offspring once captive population growth has been assured. However, developmental rates were highly variable and the more slowly developing tadpoles had not yet metamorphosed at the time of writing. A maximum total length of 68 mm was reached in the first tadpole to metamorphose (Fig. 5), and the largest tadpole reached a

maximum total length of 79 mm. Metamorphs measured 19–25 mm SVL and captive-bred males began to exhibit amplexus six months post metamorphosis, by which time they had nearly reached adult size. Further details of tadpole development are provided by Tapley et al. (2015). Once front limbs emerged from the operculum, tadpoles were separated by placing them in identical systems with

Table 3. Spawning dates and clutch sizes for *X. longipes*.

Date	Clutch number	Clutch size
20.03.14	1	93
	2	115
21.03.14	1	190
22.03.14	1	40–50
	2	40–50
05.04.14	1	40
25.08.14	1	50
04.09.14	1	Not counted
16.09.14	1	20
17.09.14	1	120
18.09.14	1	80
20.09.14	1	Not counted
29.09.14	1	50
04.10.14	1	120
05.10.14	1	300

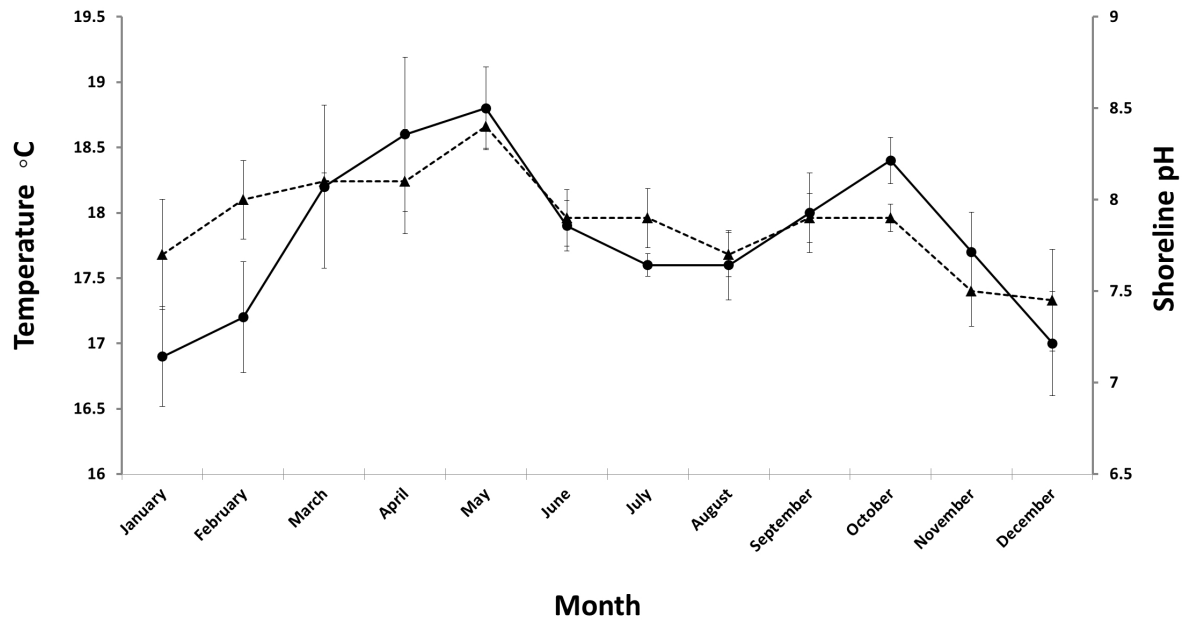


Fig. 4. Monthly water temperatures (circles) and pH (triangles) recorded from the shoreline of Lake Oku between 2008/2009 and 2013. Error bars represent SEM.

Table 4. Combinations of conditions used to rear *X. longipes* tadpoles, and the outcome in terms of tadpole survival.

Water TDS (mg/L)	Refugia (live plants)	Detritus	Lighting	Tannins	Isolated from adult system?	Tadpoles survived?
20	-	-	-	-	+	+
	-	-	+	-	+	
	-	-	-	-	-	
	-	-	+	-	-	
	+	-	+	-	-	
	+	+	+	-	-	
	-	-	-	+	-	
	-	-	+	+	-	
	+	-	+	+	-	
	+	+	+	+	-	
	+	+	+	-	+	
+	+	+	+	+		
150	-	-	-	-	-	-
	-	-	+	-	-	
	+	-	+	-	-	
	+	+	+	-	-	
	+	+	+	+	-	
	-	-	-	+	-	
	-	-	-	-	+	
	-	-	+	-	+	
	+	-	+	-	+	
	+	+	+	-	+	
	+	+	+	+	+	
	-	-	-	+	+	

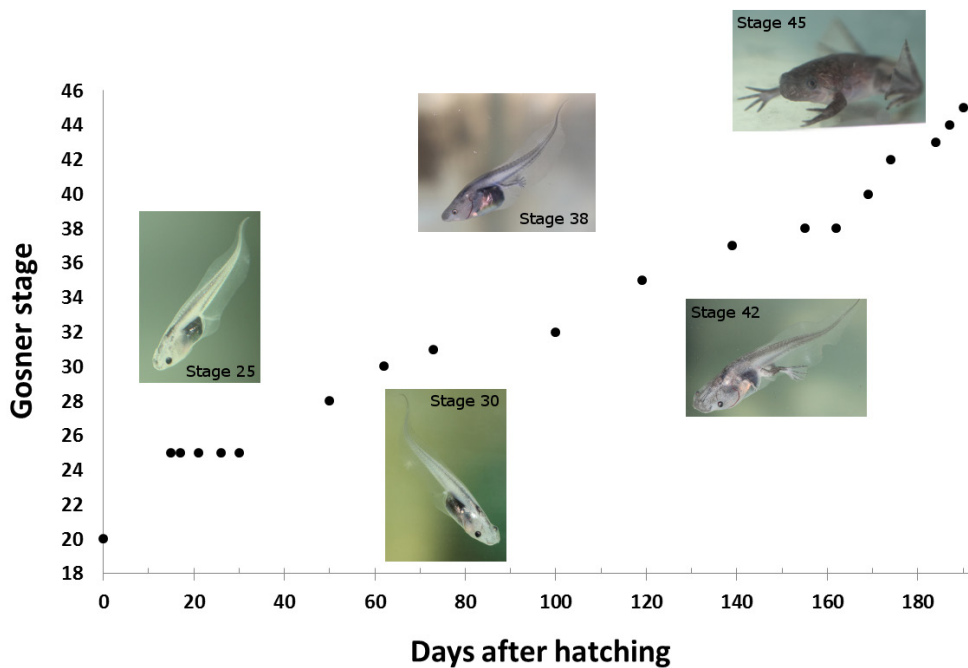


Fig. 5. Gosner stage progression of the most rapidly developing *X. longipes* tadpole. Hatching to metamorphosis took 193 days, but smaller tadpoles had only reached stage 35 by this point.

sponge filters that had been matured in the system housing the adult frogs, but with a shallower water depth of 15 cm to facilitate access to the surface for breathing. Metamorphosis from this point took around seven days to complete. Froglets fed on a similar range of prey items to adults.

Discussion

Although the husbandry of adult *X. longipes* is largely similar to that established for other *Xenopus* species (Green 2012), and adult frogs are able to survive a range of water parameters, the tadpoles are more sensitive. The dietary requirements of tadpoles are similar if not identical to those of *X. laevis* and *X. tropicalis*, but tadpoles appear to be more sensitive to the mineral/solute content of water. Tadpoles maintained in water with a TDS higher than around 80 ppm died rapidly and tadpoles developed well with a TDS of around 20 ppm. Total Dissolved Solids represent the total amount of dissolved mobile charged ions, including minerals, salts or metals and is closely related to hardness, but includes a broader range of dissolved substances. Typically, very low solute content of aquarium water can lead to osmotic imbalances in amphibians, but species may adapt evolutionarily to relatively pure water (Odum and Zippel 2008). Sensitivity to hardness or TDS values in *Xenopus* is not without precedent. The tadpoles of the softwater specialist *X. gilli* from the Cape also appears to be intolerant of hard, alkaline conditions (Rau 1978), while the reproductive success of captive *X. laevis* is improved by matching the hardness of their wild environment (Godfrey and Sanders 2004).

Other amphibians including the Hellbender *Cryptobranchus alleganiensis* have been shown to be reproductively sensitive to TDS levels (Ettling et al. 2013). The closely related *X. amieti* has been reproduced with hormonal induction in captivity (*Xenopus Express* pers. comm.), and the tadpoles of this species were maintained in hard water with success. However, there are no field data for water quality in its wild range and the larger distribution of *X. amieti*, which is not restricted to a single lake (Tinsley and Measey 2004b), may have led to the evolution of less specific environmental requirements. Our combinations of environmental conditions, summarized in Table 3, were not fully exhaustive and so the effects of some parameters (particularly tannins) cannot be fully elucidated based on these data. Tannins are thought to be important in reducing the frequency of fungal infections in the tadpoles of some anuran species (e.g., *Theleodermacorticalis*; Rauhaus et al. 2012), but there are no data concerning the tannin levels in Lake Oku. The forested shores of Lake Oku do produce inputs of leaf litter (so far unquantified) suggesting some levels of tannins, but this needs to be confirmed. Underwater photographs of the lake suggest relatively clear water (T. Doherty-Bone pers. obs.), which may mean that tannins are unimportant or potentially harmful in this species.

Amplexus and egg-laying behavior is similar to other *Xenopus*, although we did not observe calling in close association to spawning. Indeed, calls were very rare in general and we were unable to record them despite repeated efforts. Amplexus and oviposition were exclusively diurnal, in comparison to the often nocturnal habit of *X. laevis* (Green 2012) and the apparent strictly nocturnal amplexus, calling, and spawning reported

from hormone induced *X. amieti* (*Xenopus* Express pers. comm.). Specific triggers involved in stimulating spawning activity remain unclear. In a species from a habitat that is relatively stable year round (Fig. 4), and with no periods of drought and pond drying, it is possible that reproduction can take place year round and strong environmental stimuli are not required. Although initial spawning was associated with a change in temperature and pH, the breeding season is not documented in the wild and there is no evidence that this seasonal change accompanies the initiation of breeding in nature. Our observations suggest that heavy feeding may contribute to spawning activity, and so breeding may be more linked to a threshold in body condition than to external triggers. Kobel et al (1996) have suggested that some *Xenopus* species breed following first rains, when nutrients in the water have increased and secondary productivity of invertebrates is thus stimulated. Our observations indicated the initial stimuli of changing temperature, but correlated more strongly with increased availability of food. These speculations merit further investigation.

Clutch size (7–300; Table 3) was smaller than that produced by *X. laevis* (500–30,000 eggs Green, 2012) or *X. tropicalis* (1,000–3,000 eggs; Green, 2012). This may partly reflect the smaller body size of *X. longipes*, but may also be a function of breeding in a more stable lake system habitat, where there may be advantage in producing a smaller number of larger eggs. The fact that egg size is similar for *X. laevis* and *X. longipes* (1.3 mm [Brown 2004] and 1.23 mm, respectively), as well as for a number of other *Xenopus* species much larger than *X. longipes* (Kobel et al. 1996) supports this hypothesis. The pattern of small clutch size and relatively large eggs is continued in the very large tadpoles of this species (maximum total length 79 mm), particularly compared with adult size (32–36 mm snout-to-vent length [SVL]; Loumont and Kobel 1991); see Tapley et al. (2015). The closely related *X. amieti*, which has larger adults than *X. longipes*, has a tadpole of only 40 mm total length (Channing and Rodel 2012), while the very large *X. laevis* has tadpoles of 80 mm compared with adults of over 140 mm SVL (Green 2012). The metamorphs of *X. longipes* are correspondingly large relative to adult size, being similar in size to the metamorphs of *X. laevis* despite a fivefold difference in adult size between the two species (see Tapley et al. (2015), for further discussion of larval size).

Larval development was slower in *X. longipes* than congeners. Larval duration was 193 days at 17–19 °C for the fastest developing larva, in comparison to the faster development of *X. laevis* (42–56 days (Green 2012); 53 days at 18 °C; Gomez-Mestre et al. 2010) or *X. tropicalis* (21–42 days; Green 2012). Several healthy tadpoles of *X. longipes* remained untransformed at 240 days post hatching. This may, again, be linked to a relatively stable breeding habitat at higher altitude, where very low seasonal variation in environmental parameters (Fig. 4), lower temperatures, and no risk of the water body drying

out may select for a longer larval phase (Werner 1986). In *X. gilli*, which is found in more temperate lowland habitat in the extreme south of the African Cape, lower temperatures comparable with those measured in Lake Oku are also associated with the long developmental duration of this species (120 days; Rau 1978), albeit still shorter than for *X. longipes*.

The observations presented herein provide the first insight into the behavior, development, and captive requirements in *X. longipes*. This is of particular note as to the best of our knowledge the tadpoles of this species have never been observed alive in the field and so nothing is known of their habits in nature. In particular, the high sensitivity to mineral content and smaller clutch size of this species than in commonly maintained *Xenopus* may make *X. longipes* more susceptible to aquatic pollution and less able to recover quickly from declines. Moreover, this characteristic highlights the limitations of the “analogue species” concept (Preece 1998; Michaels et al. 2014), whereby common relatives of a threatened species are used as models to develop husbandry strategies before working with target, usually Critically Endangered, species. The relative ease of breeding and rearing *X. laevis* in captivity does not entirely transfer to *X. longipes*, particularly where water TDS for tadpoles is concerned.

Our findings will hopefully improve success with this species in other institutions, and contribute to the long-term viability of captive colonies. This includes attaining reproduction from the first generation of captive bred *X. longipes*. Once reproduction is achieved regularly, a studbook should be developed to ensure that a viable population of this species is maintained in captivity long-term, both for conservation breeding and for research purposes. A studbook would require individual marking techniques as *X. longipes* do not have distinctive skin markings. Such marking techniques has not yet been trialled in this species. *Xenopus longipes* is one of only two vertebrates known to be dodecaploid (the other being *X. ruwenzoriensis*) and so there is considerable interest in this species as a model laboratory organism. Inclusion of *X. longipes* in research captive colonies may help to secure the future of this species in captivity.

Although the current captive populations of *X. longipes* are not managed under strict enough biosecurity controls to be suitable for reintroduction efforts (IUCN/SSC 2014), laboratory techniques for other *Xenopus* exist to generate “clean” animals (e.g., Kay and Peng 1991). There is therefore potential to use these techniques to create biosecure cohorts that could safely be used for reintroduction should it be required. Moreover, husbandry protocols can also be distributed to Cameroonian specialists so that conservation breeding facilities can be developed in country if necessary; this option is often preferable due to reduced risk of disease transmission and reduced cost. More work is required to fully un-

derstand and control the reproduction of this species in the laboratory as well as the field.

Conclusions

Although superficially similar to other *Xenopus* species better established in captivity, the husbandry and captive breeding of *X. longipes* differs in several important aspects. The breeding triggers are poorly defined and less obvious than for many other species, which often breed in response to large water changes with cool water. Clutches are small and eggs are relatively large for the adult body size compared with other *Xenopus* species. The tadpoles are also very large and take a very long time to develop in comparison with other species. Moreover, they are highly sensitive to dissolved solids. These characters may reflect adaptation to a single volcanic lake with a stable environment.

Acknowledgments.—The captive colony of *Xenopus longipes* was exported under permit from the Cameroon Ministry of Forestry & Wildlife (0928/PRBS/MINFOF/SG/DFAP/SDVEF/SC and 0193/CO/MINFOF/SG/DFAP/SDVEF/SC), following prior consultation with the Oku community, who also sanctioned access to their lake. We thank Gonwouo Nono LeGrand, Ndifon David, Roland Ndifon, Henry Kolem, and Robert Browne for logistical assistance within Cameroon. Field work was supported by the Royal Zoological Society of Scotland, an Erasmus Darwin Barlow grant from the ZSL, a Small Project Ecological Grant from the British Ecological Society, an Amphibian Conservation Fund grant from the European Association of Zoos and Aquaria, and a Mohammed bin Zayed Conservation grant. We also extend our thanks to Brian Zimmerman, Alex Cliffe, and Rachel Jones (Aquarium, ZSL London Zoo) for their assistance in managing aquatic systems. We would like to thank Andrew Cunningham (Institute of Zoology, ZSL) for his support in initiating the foundation of the captive colony of *X. longipes*. Finally, we would like to thank the three referees, including Matthias Goetz (Durrell Wildlife Conservation Trust) who waived anonymity, for their comments on the manuscript.

Literature Cited

Antwis RE, Browne RK. 2009. Ultraviolet radiation and vitamin D₃ in amphibian health, behavior, diet and conservation. *Comparative Biochemistry and Physiology*, Part A 154: 184–190.

Antwis RE, Haworth RL, Engelmoer DJP, Ogilvy V, Fidgett FL, Preziosi RF. 2014. *Ex situ* diet influences the bacterial community associated with the skin of red-eyed tree frogs (*Agalychnis callidryas*). *PLoS ONE* 9(1): e85563. doi: 10.1371/journal.pone.0085563

Birkett J, Vincent M, Banks C. 1999. Captive management and rearing of the roseate frog, *Geocrinia rosea*,

at Melbourne Zoo. *Herpetofauna* 29: 49–56.

Blackburn DC, Evans BJ, Pessier AP, Vredenburg VT. 2010. An enigmatic mortality event in the only population of the Critically Endangered Cameroonian frog *Xenopus longipes*. *African Journal of Herpetology* 59(2): 1–12.

Brown DD. 2004. A tribute to the *Xenopus laevis* oocyte and egg. *Journal of Biological Chemistry* 279(44): 45,291–45,299.

Browne RK, Seratt J, Vance C, Kouba A. 2006. Hormonal induction with priming and in vitro fertilisation increases egg numbers and quality in the Wyoming toad (*Bufo baxteri*). *Reproductive Biology Endocrinology* 4(34): 1–11.

Browne RK, Pereboom Z. 2009. Lake Oku clawed frog rescued. AArk Newsletter, No. 6 (March 2009). Available: http://www.amphibianark.org/Newsletters/amphibian_ark_news_6.htm [Accessed: 27 January 2014].

Browne RK, Wolfram K, Garcia G, Bagaturov M, Pereboom ZJMM. 2011. Zoo-based amphibian research and conservation programs. *Amphibian & Reptile Conservation* 5: 1–14.

Channing AE, Rödel MO, Channing J. 2012. *Tadpoles of Africa: The Biological and Identification of All Known Tadpoles in Sub-Saharan Africa*. Frankfurt Contributions to Natural History. Volume 55. Edition Chimaira, Frankfurt/M., Germany. 404 p.

Densmore CL, Green DE. 2007. Diseases of amphibians. *ILAR Journal* 48: 235–254.

Doherty-Bone, TM, Ndifon RK, Nyingchia ON, Landrie FE, Yonghabi FT, Dufus ALJ, Price S, Perkins M, Bielby J, Kome NB, LeBreton M, Gonwouo LN, Cunningham AA. 2013. Morbidity and mortality of the Critically Endangered Lake Oku clawed frog *Xenopus longipes*. *Endangered Species Research* 21: 115–128.

Dugas MB, Yeager J, Richards-Zawacki CL. 2013. Carotenoid supplementation enhances reproductive success in captive strawberry dart frogs (*Oophaga pumilio*). *Zoo Biology* 32(6): 655–658.

Ettling JA, Wanner MD, Schuette CD, Armstrong SL, Pedigo AS, Briggler JT. 2013. Captive reproduction and husbandry of adult Ozark hellbenders, *Cryptobranchus alleganiensis bishopi*. *Herpetological Review* 44(4): 605–610.

Gagliardo R, Crump P, Griffith E, Mendelson J, Ross H, Zippel, K. 2008. The principles of rapid response for amphibian conservation, using the programmes in Panama as an example. *International Zoo Yearbook* 42: 124–135.

Gascon C, Collins JP, Moore RD, Church DR, McKay JE, Mendelson JR III. (Editors). 2007. Amphibian Conservation Action Plan. IUCN/SSC Amphibian Specialist Group. Gland, Switzerland and Cambridge, United Kingdom. 64 p.

Godfrey EW, Sanders GE. 2004. Effect of water hardness on oocyte quality and embryo development in the afri-

- can clawed frog (*Xenopus laevis*). *Comparative Medicine* 54: 140–145.
- Gomez-Mestre I, Saccoccio VL, Iijima T, Collins EM, Rosenthal GG, Warkentin KM. 2010. The shape of things to come: Linking developmental plasticity to post-metamorphic morphology in anurans. *Journal of Evolutionary Biology* 23(7): 1,364–1,373.
- Gosner KL. 1960. A simplified table for staging anuran embryos and larvae with notes on identification. *Herpetologica* 16(3): 183–190.
- Gratwicke B. 2012. Amphibian rescue and conservation project—Panama. *Froglog* 102: 17–20.
- Green SL. 2012. *The Laboratory Xenopus sp.* CRC Press, Taylor & Francis Group, United Kingdom. 180 p.
- Isaac NJB, Redding DW, Meredith HM, Safi, K. 2012. Phylogenetically-informed priorities for amphibian conservation. *PLoS ONE* 7: e43912. doi: 10.1371/journal.pone.0043912.
- IUCN/SSC. 2014. Guidelines on the Use of *Ex Situ* Management for Species Conservation. Version 2.0. Gland, Switzerland. Available: www.iucn.org/about/work/programmes/species/publications/iucn_guidelines_and_policy_statements/ [Accessed: 06 September 2015].
- Kay BK, Peng HB (Editors). 1991. *Xenopus laevis: Practical Uses in Cell and Molecular Biology*. Volume 36. Academic Press, San Diego, California, USA. 718 p.
- King JD, Muhlbauer M.C, James A. 2011. Radiographic diagnosis of metabolic bone disease in captive bred mountain chicken frogs (*Leptodactylus fallax*). *Zoo Biology* 30: 254–259.
- Kling GW. 1988. Comparative transparency, depth of mixing, and stability of stratification in lakes of Cameroon, West Africa. *Limnology and Oceanography* 33: 27–40.
- Kobel HR, Loumon C, Tinsley RC. 1996. The extant species. Pp. 9–31 In: *The Biology of Xenopus*. Editors, Tinsley RC, Kobel HR. Oxford University Press, Oxford, United Kingdom. 440 p.
- Kouete MT, Wilkinson M, Gower DJ. 2012. First Reproductive Observations for *Herpele Peters*, 1880 (Amphibia: Gymnophiona: Herpelidae): Evidence of Extended Parental Care and Maternal Dermatology in *H. squalostoma* (Stutchbury, 1836). *ISRN Zoology* 2012: Article ID 269690, (7 pages). doi: 10.5402/2012/269690
- Loumont C, Kobel HR. 1991. *Xenopus longipes* sp. nov., a new polyploid pipid from western Cameroon. *Revue Suisse de Zoologie* 98: 731–738.
- Michaels CJ, Gini B, Preziosi RF. 2014. The importance of natural history and species-specific approaches in amphibian *ex-situ* conservation. *The Herpetological Journal* 24: 135–145.
- Michaels CJ, Preziosi R. 2013. Basking behaviour and ultraviolet B radiation exposure in a wild population of *Pelophylax lessonae* in Northern Italy. *Herpetological Bulletin* 124: 1–8.
- Nieuwkoop PD, Faber J. 1994. *Normal Table of Xenopus laevis (Daudin): A Systematical & Chronological Survey of the Development from the Fertilized Egg till the End of Metamorphosis*. Garland Publishing Inc., New York, New York, USA. 282 p.
- Noonan SC, Savage GP. 1999. Oxalate content of foods and its effect on humans. *Asia Pacific Journal of Clinical Nutrition* 8(1): 64–74.
- Norris S. 2007. Ghosts in our midst: Coming to terms with amphibian extinctions. *Bioscience* 57: 311–316.
- Ogilvy V, Preziosi RF, Fidgett AL. 2012. A brighter future for frogs? The influence of carotenoids on the health, development and reproductive success of the red-eye tree frog. *Animal Conservation* 15(5): 480–488.
- Preece DJ. 1998. The captive management and breeding of poison-dart frogs, family Dendrobatidae, at Jersey Wildlife Preservation Trust. *Dodo* 34: 103–114.
- Pryor GS. 2014. Tadpole nutritional ecology and digestive physiology: Implications for captive rearing of larval anurans. *Zoo Biology* 33(6): 502–507.
- Rauhaus A, Gawor A, Perl RGB, Scheld S, van der Straeten K, Karbe D, Pham CT, Nguyen TQ, Ziegler T. 2012. Larval development, stages and an international comparison of husbandry parameters of the Vietnamese Mossy Frog *Theloderma corticale* (Boulenger, 1903) (Anura: Rhacophoridae). *Asian Journal of Conservation Biology* 1(2): 51–66.
- Rosol TJ, Chew DJ, Nagode LA, Capen CC. 1995. Pathophysiology of calcium metabolism. *Veterinary Clinical Pathology* 24(2): 49–63.
- Stuart SN, Hoffmann M, Chanson JS, Cox NA, Berridge RJ, Ramani P, Young BE (Editors). 2008. *Threatened Amphibians of the World*. Lynx Edicions, Barcelona, Spain; IUCN, Gland, Switzerland; and Conservation International, Arlington, Virginia, USA. 758 p. Available: <http://www.amphibians.org/publications/threatened-amphibians-of-the-world/> [Accessed: 07 September 2015].
- Tapley B, Acosta AR. 2010. Distribution of Typhlonectes natans in Colombia, environmental parameters and implications for captive husbandry. *Herpetological Bulletin* 113: 23–29.
- Tapley B, Michaels CJ, Doherty-Bone TM. 2015. The tadpole of the Lake Oku clawed frog *Xenopus longipes* (Anura; Pipidae). *Zootaxa* 3981(4): 597–600. doi: 10.11646/zootaxa.3981.4.10.
- Tinsley R, Measey J. 2004a. *Xenopus longipes*. The IUCN Red List of Threatened Species. Version 2014.3. Available: www.iucnredlist.org [Accessed: 12 March 2015].
- Tinsley R, Measey J. 2004b. *Xenopus amieti*. The IUCN Red List of Threatened Species. Version 2014.3. Available: www.iucnredlist.org [Accessed: 12 March 2015].
- Verschooren E, Brown RK, Vercammen F, Pereboom J. 2011. Ultraviolet B radiation (UV-B) and the growth and skeletal development of the Amazonian milk frog

Breeding and rearing the Lake Oku Clawed Frog

(*Trachycephalus resinifictrix*) from metamorphosis. *Journal of Physiology and Pathophysiology* 2: 34–42.

Werner EE. 1986. Amphibian metamorphosis: Growth rate, predation risk, and the optimal size at transformation. *American Naturalist* 128(3): 319–341.

Wilkinson M, Sherratt E, Starace F, Gower DJ. 2013 A new species of skin-feeding caecilian and the first report of reproductive mode in Microcaecilia (Amphib-

ia: Gymnophiona: Siphonopidae) *PLoS ONE* 8(3): e57756. doi: 10.1371/journal.pone.0057756.

Zippel K, Johnson K, Gagliardo R, Gibson R, McFadden M, Browne R, Martinez C, Townsend E. 2011. The amphibian ark: A global community for *Ex Situ* conservation of amphibians. *Herpetological Conservation and Biology* 6: 340–352.



Christopher Michaels is a conservation biologist and herpetoculturist working in the Herpetology Section at the Zoological Society of London. Chris gained his doctorate in amphibian husbandry from the University of Manchester and his interests include using captive husbandry to inform and complement conservation in the field, as well as direct involvement in field conservation. His primary taxonomic interest is in tailed amphibians and he is associated with several field conservation projects on this group in Mexico, but also works on projects involving anurans and caecilian amphibians.



Benjamin Tapley is a conservation biologist at the Zoological Society of London. Benjamin's primary interests include the conservation breeding and captive management of amphibians and he is chair of the British and Irish Association of Zoos and Aquariums, Reptile and Amphibian Working Group, and co-chair of the Amphibian Captive Breeding Working Group. Benjamin is currently involved in several amphibian conservation programs and is currently working with Chinese Giant Salamanders, Mountain Chicken Frogs, and Megophryid frogs in Vietnam.



Luke Harding is a senior keeper in the Herpetology Section of the Zoological Society of London, London Zoo. He has extensive experience in the training of animals from police dogs to crocodiles and is particularly interested in using these techniques to manage reptiles in zoo settings. He has a long-standing involvement in the Mountain Chicken Frog conservation program, having lived on Dominica to take part in fieldwork on the species, as well as being involved in a number of other field monitoring and conservation projects for reptiles and amphibians.



Zoe Bryant is a qualified keeper in the Herpetology Section of Zoological Society of London, London Zoo. She is interested in the husbandry of a wide variety of amphibians and reptiles and has particularly focused on developing enrichment and training methods for captive reptiles.



Sebastian Grant is a senior keeper at the Zoological Society of London, London Zoo with a broad interest in captive husbandry, particularly of amphibians and reptiles, as well as invertebrates and fish.



George Sunter is a lead keeper at the Zoological Society of London, London Zoo, having worked there for the past 17 years. He is an experienced herpetologist and Komodo Dragon enthusiast and currently his interests include the management of nocturnal mammals and naked mole rats in captivity.



Iri Gill is deputy team leader of the Herpetology Section of the Zoological Society of London, London Zoo. He has particular interests in the management of crocodylians and venomous reptiles in captivity. He is a member of the IUCN Crocodylian Specialist Group, EAZA Venomous Snake RCP Co-ordinator, and BIAZA Venomous Reptile Focus Group Co-ordinator. Iri is currently involved in Gharial conservation in Nepal and India.



Oscar Nyngchia is a member of the Oku community and has been working as a field technician for the CRAAC Project since 2008. He has principally been involved with surveying Lake Oku's frogs and water chemistry, as well as working on community education events. He has taken part in surveys of caecilians and other lakes across Cameroon.



Thomas Doherty-Bone is the manager of the Conservation Research and Action for Amphibians of Cameroon (CRAAC) Project, hosted by the Royal Zoological Society of Scotland, which has been running since 2008. Work primarily revolves around surveying amphibians and their habitats, training other amphibian conservationists, assessing threats, engaging with stakeholders, and deploying conservation action. Work is especially directed at high priority amphibian species and habitats such as *Xenopus longipes* and Lake Oku. Other work has involved assessing amphibian chytrid fungus in Cameroon, caecilian baseline surveys, and crater lake surveys. Thomas has a B.Sc. (Hons) in zoology from the University of Aberdeen and a Masters in advanced methods in taxonomy & biodiversity from Imperial College London. Thomas is currently completing a doctorate on the impacts of alien invasive species on freshwater biodiversity and ecosystem functioning at the University of Leeds.